

## PRODUCT CATALOGUE



**Battery operating aspirators**  
**Portable electric aspirators**  
**Electric aspirators for medical procedures**  
**Surgical electric aspirators**  
**Aspiration sets for central vacuum system**  
**Disposable collecting cartridges**  
**Accessories**



## SO-1 Battery operating aspirator

**SO-1** is a portable aspirator adapted for use in vehicles. It may be used when giving first aid in emergency departments (ED), in doctors' offices, nursing homes, hospices and for the suction procedures at patient's home. High capacity batteries ensure long operating time without having to recharge.



Catalogue number	SO-01-W	SO-01-Z-40	SO-01-Z-80
Name	<b>SO-1/W</b>	<b>SO-1/W</b>	
Max air-flow	30 l/min		
Max vacuum level	up to 95kPa (+0%/-10%)		
Vacuum adjustment range	(0÷95)kPa		
Capacity of the collecting containers	1l		
Type of applied parts	CF		
Isolation class	II		
Power consumption	60W		
Power supply DC	(12-15)VDC		
Power supply AC	directly from 230V/50Hz	by external charger from 230V/50Hz	
Battery operatin time	40min	40min	80min
Dimensions	340x140x210mm		
Weight	2,8kg	2,7kg	3,2kg

## SO-1 Electric portable aspirator

**The aspirator SO-1** is mainly characterized by small size and weight. Ergonomic casing and handle for carrying provide comfort during use outside. All elements steering and controlling the work of the aspirator are placed on the joint panel, which provides access and visibility of the display when the device is placed in a transport bag.



- stepless adjustment of the maximum vacuum
- a clear indication of the current value of the vacuum
- convenient handle for carrying
- work from the mains or vehicle's cigarette lighter
- quiet and continuous operation
- small size and weight
- reusable containers and disposable cartridges

Catalogue number	SO-01-S
Name	<b>SO-1/S</b>
Max air-flow	30 l/min
Max vacuum level	up to 95kPa (+0%/-10%)
Vacuum adjustment range	(0÷95)kPa
Capacity of the collecting containers	1l or 2l
Type of applied parts	CF
Isolation class	II
Power consumption	60W
Power supply DC	(12-15)VDC
Power supply AC	directly from 230V/50Hz
Dimensions	340x140x210mm
Weight	2,6kg

## SO-2 Electric portable aspirator

**SO-2** is a portable aspirator which applies in doctors' offices, nursing homes and patient's home use.

**SO-2** is a device with a compact design, convenient to use. A well balanced handle allows for easy portability and solid casing ensures long-term operation and ease of cleaning.



- stepless adjustment of the maximum vacuum
- clear indication of the current value of the vacuum
- convenient carrying handle
- practical handle for the power cord
- quiet and continuous operation
- foot switch
- reusable containers 1l or 2l
- disposable cartridges 1l or 2l

Catalogue number	SO-02-20
Name	<b>SO-2 Ogarit</b>
Max air-flow	20 l/min
Max vacuum level	up to 80kPa (+0%/-10%)
Vacuum adjustment range	(0÷80)kPa
Capacity of the collecting containers	1l or 2l
Type of applied parts	CF
Isolation class	II
Power consumption	70VA
Power supply	230V/50Hz
Dimensions	400x250x320mm
Weight	6kg



## SO-3 Electric aspirator for medical procedures

**SO-3** is an aspirator designed to suction secretions and fluids in patients treated in dental and surgical wards, emergency departments (ED), hospices. The aspirator SO-3 is a device of small size and powerful at the same time. An efficient vacuum pump allows for comfortable operation during treatments. Due to the small dimensions, the aspirator is handy to use during treatments and its convenient handle allows for easy portability.

**The aspirator SO-3** is designed for mounting on the aesthetic, stable trolley. Placing the aspirator on the trolley increases its functionality. The trolley can be equipped with an instrumental rail, to which you can attach additional accessories.



- stepless adjustment of the maximum vacuum
- clear indication of the current value of the vacuum
- convenient carrying handle
- practical handle for the power cord
- quiet and continuous operation
- foot switch
- reusable containers 1l or 2l
- disposable cartridges 1l or 2l



Catalogue number	SO-03-30
Name	<b>SO-3/ Passat</b>
Max air-flow	30 l/min
Max vacuum level	up to 85kPa (+0%/-10%)
Vacuum adjustment range	(0÷85)kPa
Capacity of the collecting containers	1l or 2l
Type of applied parts	CF
Isolation class	II
Power consumption	70W
Power supply	230V/50Hz
Dimensions	160x400x300mm
Weight	5kg

## SO-4 Electric aspirator for medical procedures

**The aspirator SO-4** is specially designed casing that allows placement of two reusable collecting containers. Therefore, the aspirator can be used for long lasting treatments involving a large amount of suctioned fluids. The aspirator is mounted as standard on the low trolley and has a convenient handle in order to facilitate its displacement.

Optionally the aspirator **SO-4** may be furnished with the aesthetic, stable trolley. Placing the aspirator on the trolley increases its functionality. The trolley can be equipped with an instrumental rail, to which you can attach additional accessories.



- stepless adjustment of the maximum vacuum
- clear indication of the current value of the vacuum
- convenient carrying handle
- practical handle for the power cord
- quiet and continuous operation
- foot switch
- reusable containers 1l or 2l
- disposable cartridges 1l or 2l



Catalogue number	SO-04-30
Name	<b>SO-4/T</b>
Max air-flow	30 l/min
Max vacuum level	up to 85kPa (+0%/-10%)
Vacuum adjustment range	(0÷85)kPa
Capacity of the collecting containers	max 2 x 2l
Type of applied parts	CF
Isolation class	II
Power consumption	70W
Power supply	230V/50Hz
Dimensions	370x300x530mm
Weight	8kg

## SO-5 Electric surgical aspirator

**SO-5** is a surgical aspirator designed to suction in the operating field. It may be used at the operating theater, treatment rooms, emergency departments (ED) and intensive care units (ICU).

**The aspirator SO-5** is a product characterized by the highest functionality. The control panel at the hips level and two instrumental rails are of particular note. SO-5 has a practical system which allows you to check the maximum vacuum level. Having pressed one button you can read what the value of the maximum vacuum has been set. This value can be smoothly adjusted to the therapeutic needs using the special regulator. Suctioned secretions are collected in one- or two-litre containers which may be connected to each other in the different ways. The containers can be connected in series in order to maximize the capacity or mixed such as series-parallel to get the opportunity to work without interruption to empty one of the containers.

The ergonomically positioned control panel contains the following elements: start/stop button, the button of the regulator of the maximum vacuum level and indicator of the current vacuum level. The aspirator may be additionally controlled by a foot switch for even greater comfort.

The instrumental rails placed on the aspirator allow the installation of various types of accessories. The aspirator may be equipped with a practical basket for canulas, a handle for the suction catheter and a switch between the collecting containers for example.

**Aspirator SO-5 Tornado** has a convenient transporting handle and a four-caster rolling base which allow to move it freely in all directions. The brackets for placing power and foot switch cords facilitate even more the movement of the aspirator.

This aspirator is equipped as well with a convenient handle for carrying it through obstacles like thresholds or stairs.

The solid housing ensures long-term operation and helps to maintain the aspirator in clean.



- stepless adjustment of the maximum vacuum
- clear indication of the current value of the vacuum
- control system for the maximum, desired vacuum level
- guaranteed stability of the device - the center of gravity is positioned
- mounted on the four-caster (two casters may be blocked) low trolley allowing smooth displacement
- two instrumental rails
- practical handle for the power cord
- quiet and continuous operation
- foot switch
- reusable containers 1l or 2l (up to 4 containers may be connected)
- disposable cartridges 1l or 2l

**Ssak chirurgiczny SO-5**

Catalogue number	SO-05-40	SO-05-70	SO-05-100
Name	<b>SO-05-40 Tornado</b>	<b>SO-05-70 Tornado</b>	<b>SO-05-100 Tornado</b>
Max air-flow	40l/min	70 l/min	100 l/min
Max vacuum level	up to 95kPa (+0%/-10%)		
Vacuum adjustment range	(0÷95)kPa		
Capacity of the collecting containers	max 4 x 2l		
Type of applied parts	CF		
Isolation class	I		
Power consumption	160W	186W	432W
Power supply	230V/50Hz		
Dimensions	270x440x830mm		
Weight	17kg	19kg	21kg



## Aspiration sets for central vacuum system

**The aspiration sets for central vacuum system** are designed for suction during medical treatments and operations. They are dedicated for medical facilities equipped with central vacuum installation. All sets have a regulator indicating current value of the vacuum level and the instrumental rail allowing the mounting of the collecting container(s).

The regulator allows to set smoothly the maximum desired level of the vacuum in the range suitable for the given set.

The regulator can be equipped additionally with a safety container with a capacity of 0.1 l and the vacuum fast cut-off valve.

The sets CP-2 and CP-2PW are particularly recommended to drain the pleura.

**The aspiration sets for the central vacuum system** can be placed on the instrumental rail (of MODURA or EURO-STANDARD type) or trolley.

The sets are connected to a central vacuum installation with a suitable plug (AGA, DIN-type or other) compatible with the central vacuum installation.



Catalogue number	CP-02	CP-02-P
Name	<b>CP-2</b>	<b>CP-2P</b>
Max air-flow	depending on the central vacuum system parameters	up to 20kPa (+0%-10%)
Vacuum adjustment range		(0÷20)kPa
Noise level	21 dB	22 dB
Capacity of the collecting containers	1l or 2l	1l or 2l
Dimensions	225x210x319mm	310x190x320mm
Weight	0,8kg	0,8kg

## Disposable collecting cartridges

**The disposable cartridges** are designed for use with one-and two-liter reusable collecting containers produced by OGARIT.

The use of disposable cartridges eliminates the need to open the lid of the reusable collecting container filled with suctioned content for emptying. This completely reduces the contact of the medical staff with the container's contents which ensures the highest standards of hygiene in the workplace.

**The disposable cartridges** have a built-in antibacterial-hydrophobic filter which prevents the leakage of the suctioned content on the outside of the cartridge when it is fully filled-up. This allows to protect medical personnel and the environment from pathogens. For the additional protection and the convenience of use the disposable cartridges may contain a special agent, which changes the consistency of stored liquid into gel. The risk of fluid leakage out of the disposable collecting cartridge is fully reduced.

There is an additional slot in the cover allowing the easy collection of samples from the inside of the disposable cartridge.



Catalogue number	A-OG1000	A-OG1000Z	A-OG2000	A-OG2000Z
Name	<b>OG1000</b>	<b>OG1000Z</b>	<b>OG2000</b>	<b>OG2000Z</b>
Capacity	1l	1l	2l	2l
Gelling agent	NO	YES	NO	YES

## Accessories



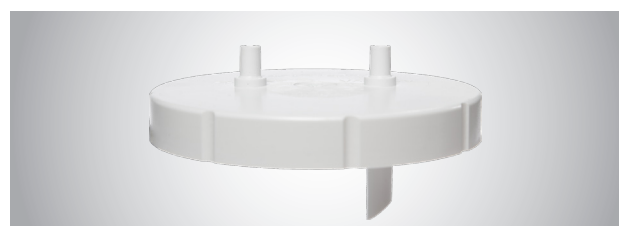
Name	<b>Container 1 I with valve</b>
Catalogue number	A-KPPC-1Z
Unit	pc
Name	<b>Container 2 I with valve</b>
Catalogue number	A-KPPC-2Z
Unit	pc



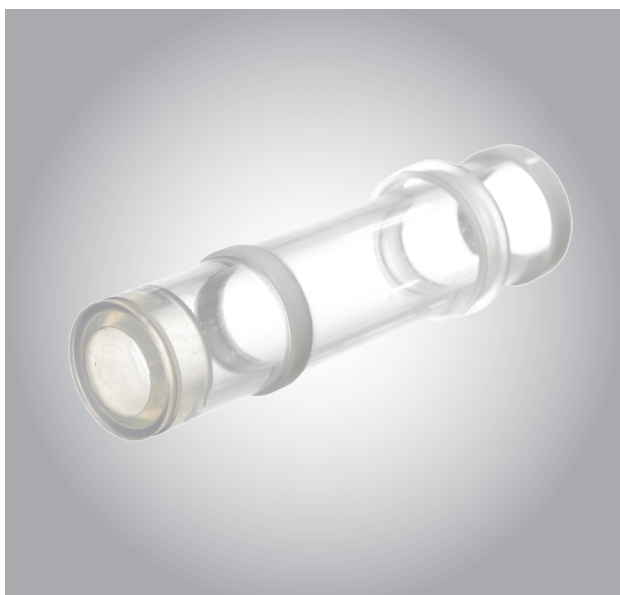
Name	<b>Container 1 I</b>
Catalogue number	A-BPC-1
Unit	pc
Name	<b>Container 2 I</b>
Catalogue number	A-BPC-2
Unit	pc



Name	<b>Container 1 I without valve</b>
Catalogue number	A-KPPC-1P
Unit	pc
Name	<b>Container 2 I without valve</b>
Catalogue number	A-KPPC-2P
Unit	pc



Name	<b>Reusable lid without valve</b>
Catalogue number	A-KPPC-P
Unit	pc
Name	<b>Reusable lid with valve</b>
Catalogue number	A-KPPC-Z
Unit	pc



Name	Floating valve
Catalogue number	A-ZPC
Unit	pc



Name	Suction switch
Catalogue number	A-PS-01
Unit	pc



Name	<b>Reusable cover gasket</b>
Catalogue number	A-UPPC
Unit	pc



Name	<b>Hydrophobic-antibacterial filter</b>
Catalogue number	A-FO-HAP01
Unit	pc



Name	<b>Trolley SO-34 for SO-3</b>
Catalogue number	A-W-SO-34-3
Unit	pc



Name	<b>Trolley SO-3</b>
Catalogue number	A-W-SO-3
Unit	pc



Name	<b>Trolley SO-34 for SO-4</b>
Catalogue number	A-W-SO-34-4
Unit	pc



Name	<b>Trolley SO-4</b>
Catalogue number	A-W-SO-4
Unit	pc

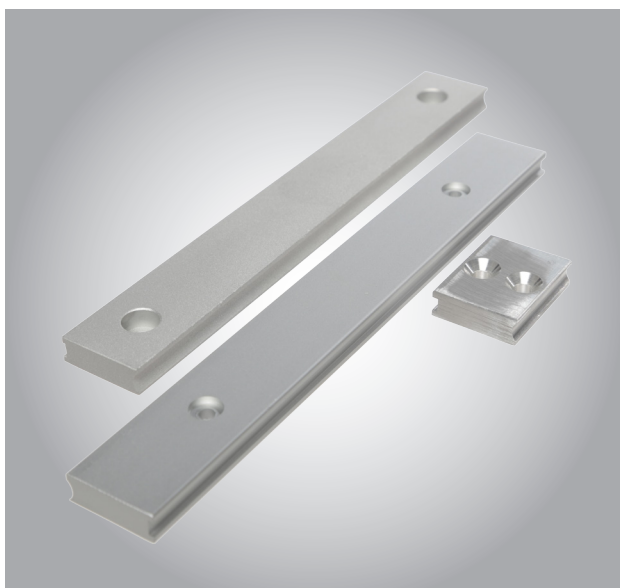




Name	<b>Container attachment to MODURA instrumental rail</b>
Catalogue number	A-ZBPC-M
Unit	pc
Name	<b>Container attachment to EUROSTANDARD instrumental rail</b>
Catalogue number	A-ZBPC-E
Unit	pc



Name	<b>Silicone tubing 6 x 12 mm</b>
Catalogue number	A-WS1206
Unit	1 m



Name	<b>MODURA instrumental rail</b>
Catalogue number	A-SI-M
Unit	m
Name	<b>EUROSTANDARD instrumental rail</b>
Catalogue number	A-SI-E
Unit	1 m



Name	<b>Tubing connector non- sterile</b>
Catalogue number	A-LDN
Unit	pc
Name	<b>Tubing connector sterile</b>
Catalogue number	A-LDS
Unit	pc



Name	<b>External charger SO-1</b>
Catalogue number	A-ZZ-SO-01
Unit	pc



Name	<b>DC power cord SO-1</b>
Catalogue number	A-DC-SO-01
Unit	pc



Name	<b>Basket for accessories</b>
Catalogue number	A-KA
Unit	pc



Name	<b>Carrying bag SO-1</b>
Catalogue number	A-TT-SO-01
Unit	pc



Name	<b>Foot switch</b>
Catalogue number	A-LN
Unit	pc

# www.ogarit.pl

We are looking for new distributors



---

P.P.H.U. OGARIT Export-Import, Ludowa 14 street, 05-092 Łomianki  
ph +48 508 367 614, +48 22 751 36 29, fax +48 22 751 39 76  
e-mail: **biuro@ogarit.pl**  
**www.ogarit.pl**